

POP UP SCREENHOUSE 4 (MP9517) & 6 (MP9509) USER GUIDES



Please read this user guide before attempting to set up your Pop Up Screenhouse. Follow the user guide carefully and keep for future reference.

**A copy of the user guide is also available on our website
www.maypoleltd.com**

POP UP SCREENHOUSE 4 (MP9517) & 6 (MP9509) USER GUIDES

WARNING – GENERAL SAFETY

- Not to be used in strong winds and extreme weather conditions.
- If using stepladders or a platform to set up the Screenhouse you will be working at height & should carefully follow the stepladder / platform manufacturer's safety instructions. You should not attempt to set up this Screenhouse from the ladder but only to use the ladder if required to assist people on the ground.

CARE OF YOUR SCREENHOUSE

- Allow material to dry completely before storing in the storage bag provided.
- Remove dirt with a soft sponge and warm water. DO NOT use detergent.
- DO NOT expose to sparks, flames or other sources of ignition.
- NOTE – during certain conditions moisture maybe visible on the inside of the material. This is the natural build up of condensation and should not be mistaken for leaking.

CONTENTS

MP9517 (4 Sided Screenhouse)

Screenhouse x 1

Fibreglass door poles x 2

Storm straps x 3

Pegs x 10

Carry Bag x 1

MP9509 (6 Sided Screenhouse)

Screenhouse x 1

Fibreglass door poles x 2

Storm straps x 5

Pegs x 16

Carry Bag x 1

BEFORE USE

Choose a clear site that is flat and if possible sheltered from the wind. Remove any sharp objects from the pitching area which could be dangerous or potentially damage the fabric.

POP UP SCREENHOUSE 4 (MP9517) & 6 (MP9509) USER GUIDES

PITCHING INSTRUCTIONS

This Screenhouse can be put up by one person but it is easier with two people.

Select a suitable location and remove the Screenhouse from the carry bag.

Hold the Screenhouse upright with the black centre hub placed on the ground. Allow the side panels to naturally fall to the ground.



Pull the side panel by the metal ring until it is fully open and locked into position.



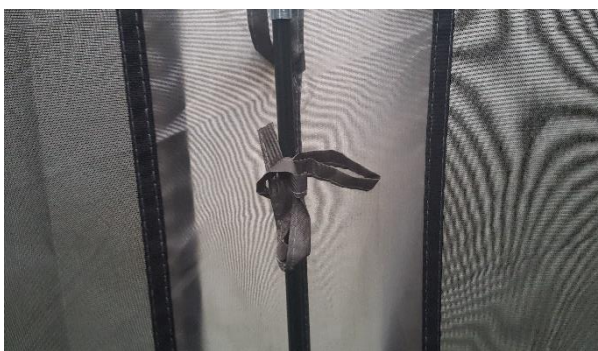
POP UP SCREENHOUSE 4 (MP9517) & 6 (MP9509) USER GUIDES

Repeat this for each of the side panels.

Once all side panels are fully open, walk inside the Screenhouse and push upwards from the centre hub of the roof until it is fully open and locked into position.



Pre assemble the fibreglass door poles. On both sides of the door insert a fibreglass pole into the bottom and top pockets. Attach with ties to hold in place.



To secure your screenhouse peg each corner and side panels. Ensure the Screenhouse is taut when pegging so it forms the correct shape.



POP UP SCREENHOUSE 4 (MP9517) & 6 (MP9509) USER GUIDES

The side panels can be zipped down or rolled up and held by toggles.



The final step is to tie a storm strap to the metal ring on each side. If the sides are zipped down a hole is located in the middle of each side to insert the storm straps through.



Tension the storm straps and secure with the pegs provided.

It is recommended each peg is driven fully into the ground at an angle of 45 Degrees away from the pegging point.

Signature

Technical Manager Maypole Ltd November 2020

Email: sales@maypoleltd.co.uk

Web: www.maypoleltd.com