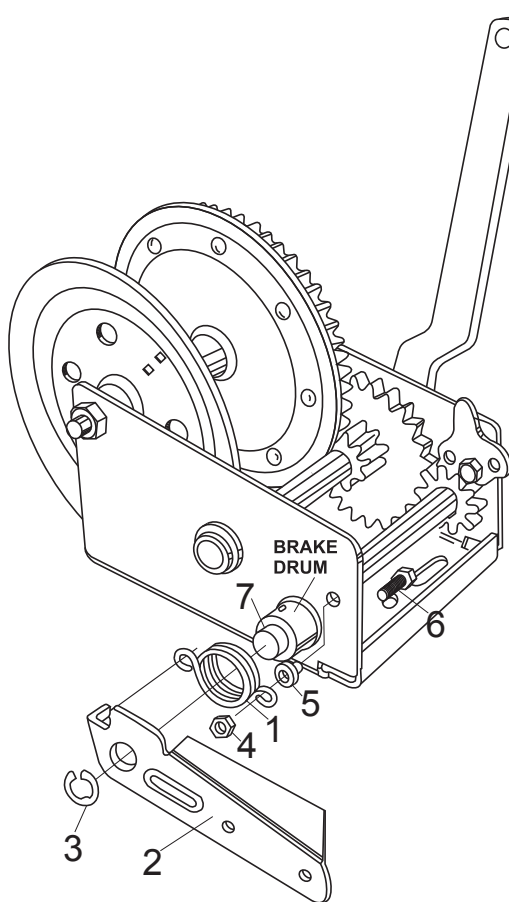


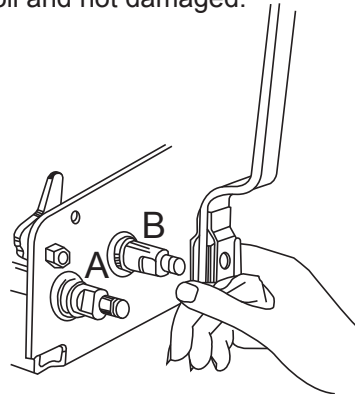
# 625KG CAPACITY WINCH WITH HAND BRAKE

## USER'S INSTRUCTIONS (ORIGINAL INSTRUCTION)

### HAND BRAKE INSTALLATION



- (A) Insert pivot bolt (6) thru frame side and then thru the spacer (5). Slide brake spring (1) over brake drum and brake spring loop on to pivot bolt (6) and secure with locknut (4).
- (B) Assemble the brake handle (2) on to pinion shaft (7) making sure the tab on the brake handle (2) is inserted into the other end loop of the brake spring (1). Press retaining ring (3) into groove to secure the brake handle (2) on to the pinion shaft (7).
- (C) Check installation for correct operation before putting a load on the winch. The brake drum must normally be free to rotate when the winch ratchet is in either position. If the brake is dragging, you will not be able to pull line off of the drum. The brake spring (1) must tighten around the brake drum when pressure is applied downward on the handle.
- (D) Periodically, check the brake components for proper operation and replace if necessary.
- (E) The brake spring (1) should be free of grease and oil and not damaged.



### SNAP-ON HANDLE INSTALLATION

- (A) Press spring loaded button on crank handle and slide on winch shaft aligning with flat surface of shaft push in as far as it will go and release button. To remove, press button in and pull handle out.

Your winch is equipped with 2 gear ratios. Ⓐ 12:1 Ⓑ 5:1

### WARNING

High forces may be created by use of a winch thereby creating potential safety hazards; therefore, it is recommended that you do not allow anyone who is not familiar with these operating instructions to operate the winch. THIS WINCH IS NOT DESIGNED TO BE A HUMAN HOIST AND SHOULD NEVER BE OPERATED WHEN THERE ARE PERSONS POSITIONED ON OR UNDER THE LOAD BEING MOVED.

## ORIGINAL INSTRUCTIONS

### **WARNING** **READ BEFORE INSTALLING AND** **OPERATING WINCH INSTALLATION**

Mounting structure must be capable of withstanding loads within the capacity of the winch. Mount winches with 3/8" (M10) diameter bolts and lock nuts.

### **OPERATING**

Ambient operating temperature between -10°C and +50°C. Do not exceed the load capacity rating of the winch. Capacity rating is based on one layer of line around drum. As line builds on drum, capacity decreases. Obtain cable and rope manufacturers recommendation for size and type. Use proper end connection for attaching the hook to the cable or rope. When anchoring line to drum, 4 to 6 wraps must remain on drum to supply friction for a proper anchor. Keep rope or cable properly aligned on drum.

**CAUTION:** NEVER FULLY EXTEND THE ROPE OR CABLE WHILE UNDER LOAD.

### **INSPECTION & MAINTENANCE**

Moving parts including gears, ratchets and shafts must be kept clean and lubricated to insure proper and safe operation.

Components can be affected by chemicals, salts and rust and should be examined for safe operation before each use. Do not operate winch if line is knotted or kinked or has any sign of weakening. Please replace a new line to ensure the operational safety. Be sure that the steel cable, rope or strap is strong enough to move the load.

Keep hands away from load bearing cables, ropes, sheaves, drums and pulleys while operating. If the switch spring is broken or locking system failure, please stop operation and repair.

### **CAUTION**

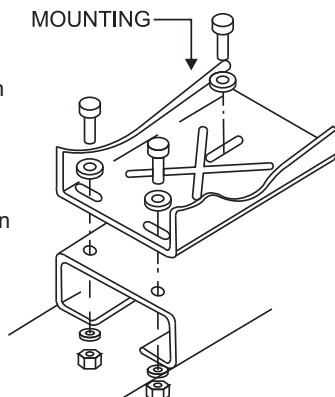
Boat trailers not equipped with keel and side hull rollers are designed to be submerged in the water when the boat is loaded, i.e., the boat should be "floated" onto the trailer. If the trailer is not submerged, attempts to "drag" the boat onto this type of trailer can cause winch failure and possible injury.

Winches are not designed to secure boats to trailers. Boat tie downs should be used.

Do not release handle when ratchet lever is in unlocked position with load on winch. Handle could spin violently which may cause serious injury.

### **NOTE :**

For increased strength and safety, this winch should be mounted with three 3/8" (M10) bolts, washers and lock washers as shown in the drawing.



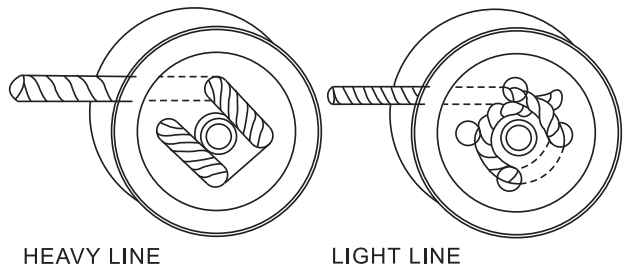
### **WARNING**

This winch should only be used for hauling or pulling loads. It must not be used for lifting or lowering loads or for the movement of humans.

### **INSTRUCTIONS FOR ATTACHING ROPE TO WINCH DRUM**

Requires no bolts, nuts or rope keeper. See illustration below of two ways of threading rope through holes in drum side.

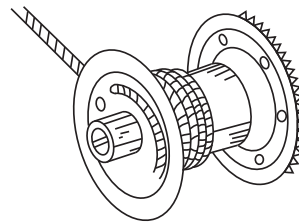
**CAUTION:** Never fully extend the rope while pulling a load. Keep four (4) complete turns of rope around the drum, otherwise rope can pull loose from drum.



### **INSTRUCTIONS FOR ATTACHING CABLE TO WINCH DRUM**

Requires cable keeper fastened through square holes. See illustration below :

**CAUTION:** Never fully extend the cable while pulling a load. Keep four (4) complete turns of cable around the drum, otherwise cable can pull loose from drum.



| MODEL NO. | RATED LOAD<br>(Safe Working Load) | NOISE LEVEL<br>dB(A) |
|-----------|-----------------------------------|----------------------|
| MP7976    | 625kg                             | 98.4                 |

HANDLE AND NUT MUST BE  
TIGHTENED AGAINST  
SHOULDER BEFORE  
OPERATING WINCH.