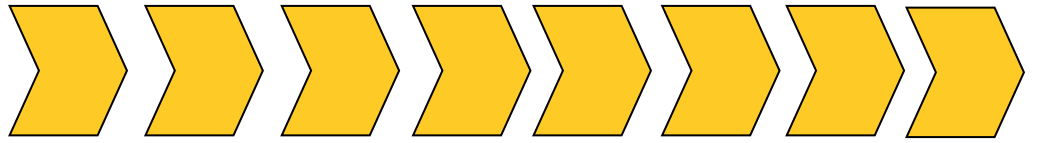


BEFORE USE

- The attachment of this cycle carrier to a vehicle is safety critical and beyond the control of the manufacturer. The user must therefore ensure that the cycle carrier is suitable for use with their vehicle & towball.
- Check the parts list after opening the package.
- Make sure that all the parts are fully assembled according to the instructions before fitting to your vehicle.
- Do not use this carrier for purposes other than those for which it is designed. Do not modify any components of the product.
- This carrier is compatible with European 50mm towballs only.
- Check the maximum weight capacity of the towbar fitted to your vehicle. NEVER exceed the capacity quoted by the towbar manufacturer.
- The net (unloaded) weight of this carrier is 17kg, a second person may be required to attach/detach the carrier on/off your vehicle.
- Never exceed the 60kg maximum carrying capacity of this product, or load more than four cycles onto the carrier.
- Do not install the cycle carrier on trailers.
- This cycle carrier is not intended for transporting tandems or recumbent bicycles.
- Remove any accessories such as baby seats, panniers, pumps, water bottles, wheel covers or complete cycle covers prior to loading any cycle onto the carrier.

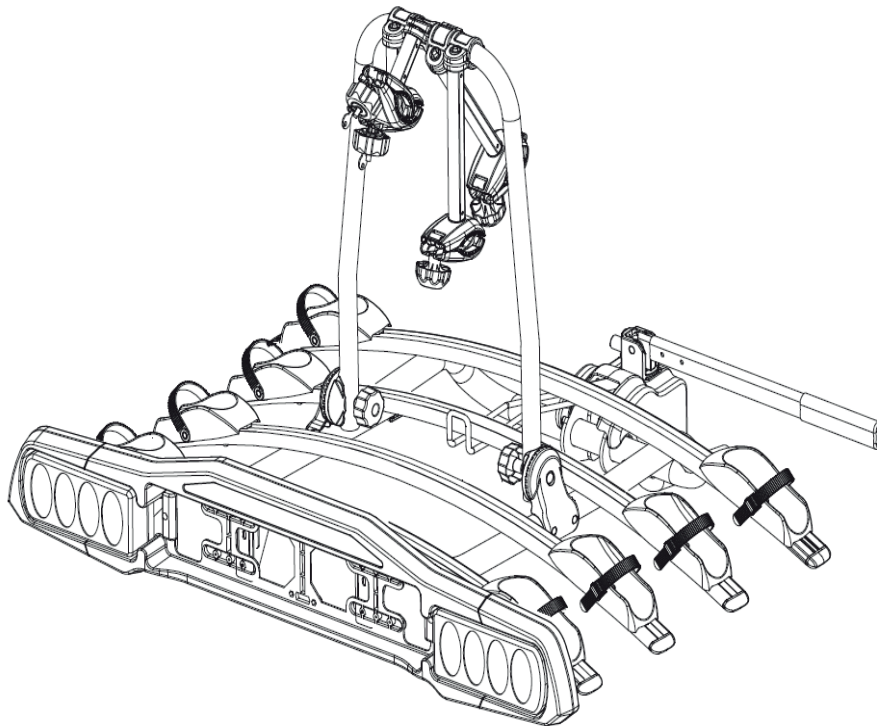
WARNING - GENERAL SAFETY

- Ensure the vehicle towball is clean and undamaged prior to fitting the carrier.
- Ensure there is adequate distance between the exhaust pipe and the cycle tyres/ carrier. The heat of the exhaust could damage the cycles or carrier.
- If your vehicle is equipped with an automatic tailgate opening system, disable this function when using the carrier and open the tailgate manually.
- Check all fixings prior to each journey and at regular intervals throughout to ensure all remain fully tightened and the cycles are secure.
- Check all lighting functions operate correctly prior to each use.
- Do not use if any part of the carrier is damaged, worn or missing.
- It is critical that all of the straps provided are always fitted, securely fastened and tensioned appropriately. One strap must be secured to the vehicle and one strap must be passed through all cycle frames and carrier frame. Ensure all are securely fastened before commencing journey and at regular intervals throughout.
- Always position the heaviest cycle first (closest to the car) followed by the next heaviest.
- The lock on the clamping lever is a vital part of the carrier fixing mechanism as well as providing some security. Locks on the frame clamps are a theft deterrent.
- Drive carefully, be aware of cross winds, avoid sudden braking & hard cornering. Reduce speed accordingly when using the carrier.
- When the cycle carrier is fitted onto a vehicle the carrier must be fitted with a number plate.
- The cycle carrier will increase the overall length and width of the vehicle; extra care must be taken whilst negotiating tight spaces or manoeuvring.
- Make sure there is safe distance between the carrier and the ground especially when driving on uneven ground.
- This carrier is designed for temporary use only; remove when not in use or before going through a car wash.



BC3024 4 BIKE TOWBALL MOUNTED CYCLE CARRIER

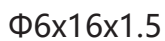
USER GUIDE



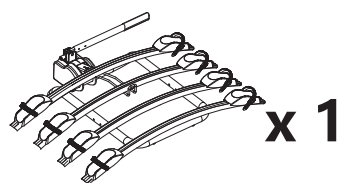
Please read and follow this operating manual and all safety instructions carefully when using this cycle carrier

Keep these instructions for future reference. When passing the carrier on to others be sure to also include all documentation. The instruction leaflet is also available on our website:

www.maypoleltd.com



1



x 1



x 2



x 8



M6x47

x 4



x 4



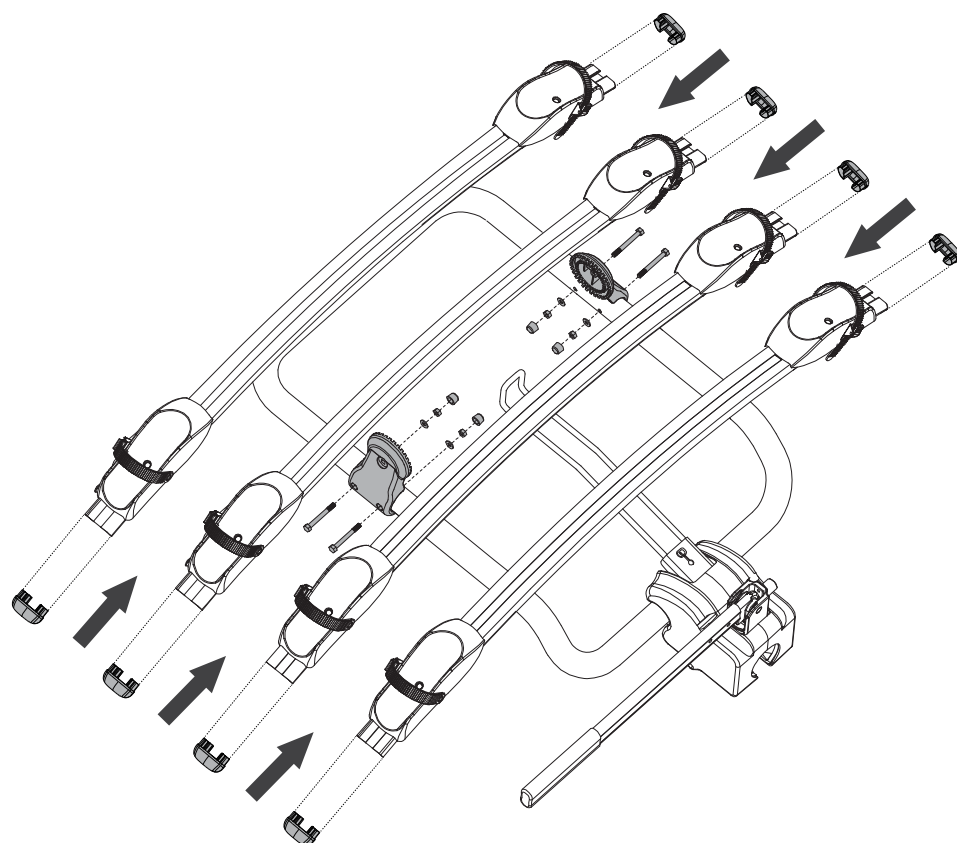
M6

x 4

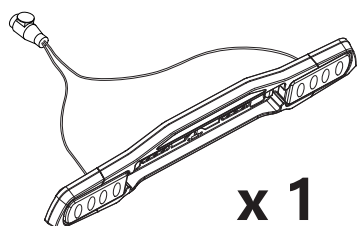


Φ6x12x2

x 4



2



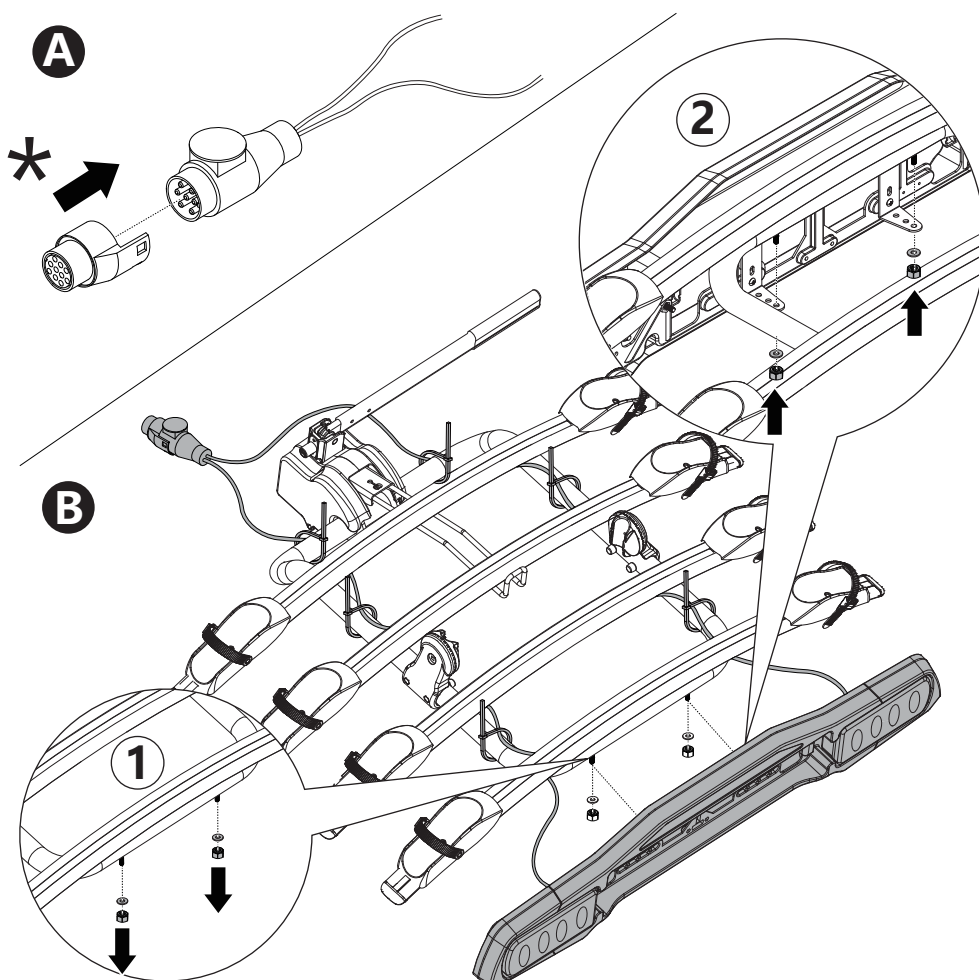
x 1



x 1

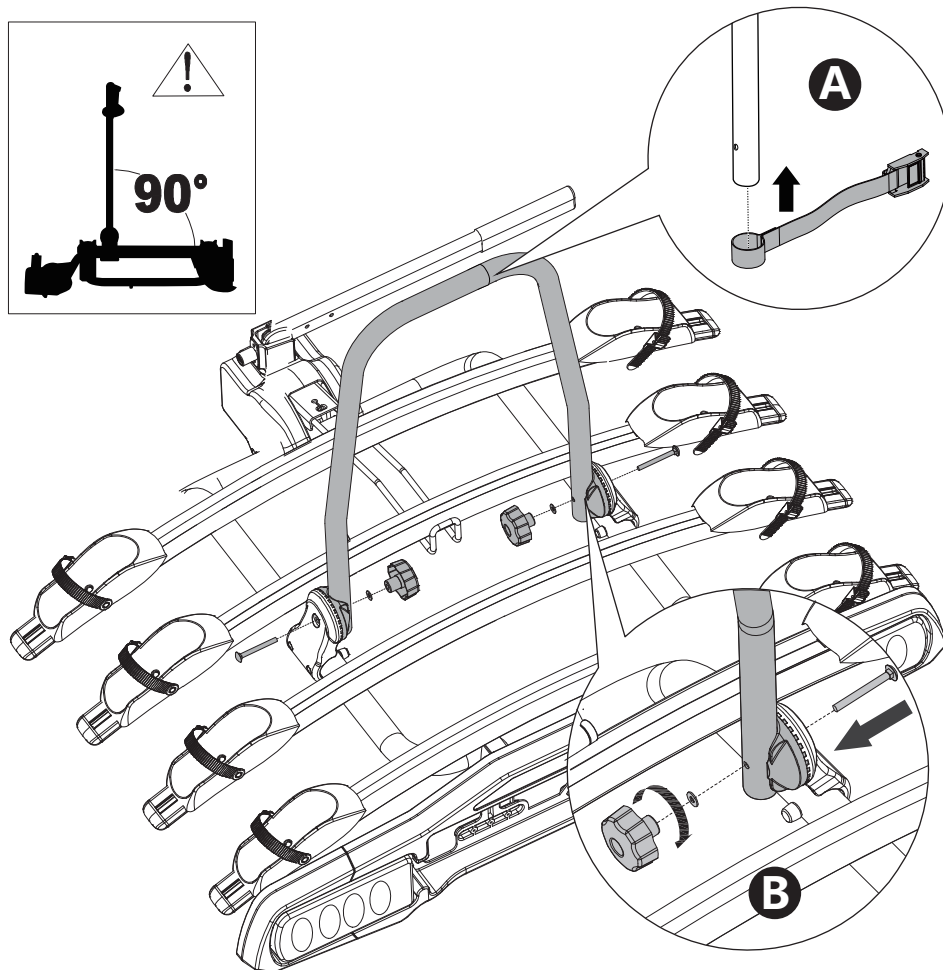
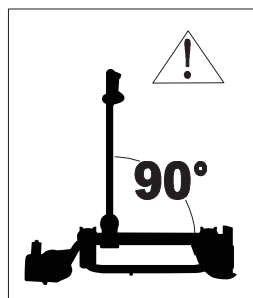
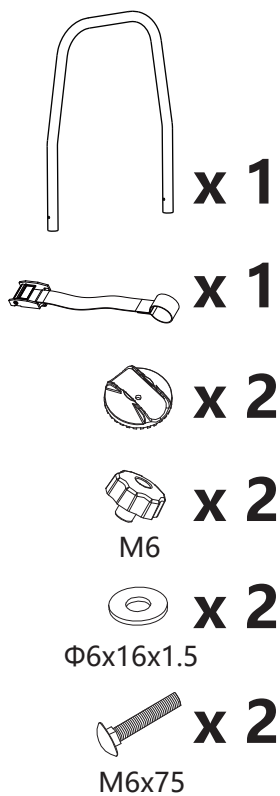


x 6

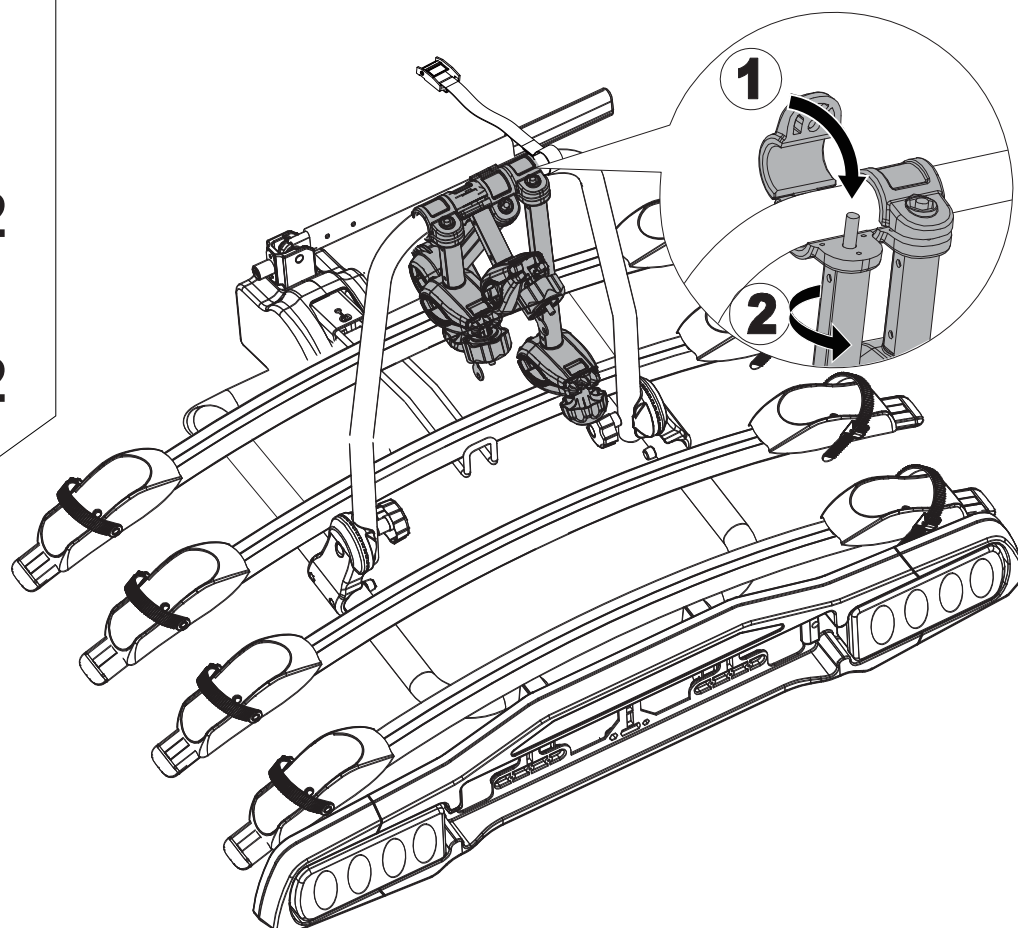
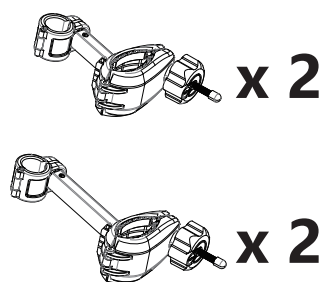


*Required for vehicles equipped with 12N type towing electrics. Wired in accordance to ISO1724

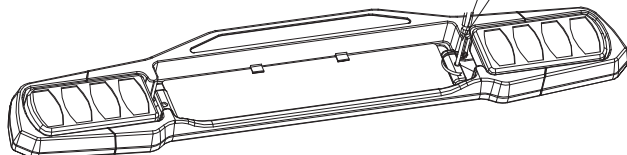
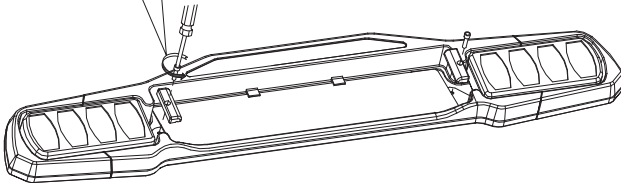
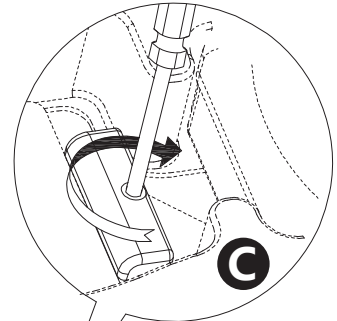
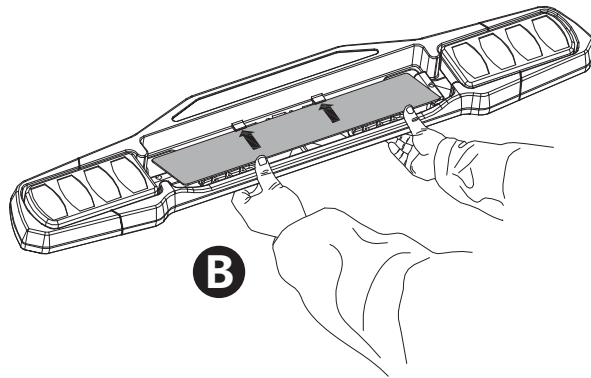
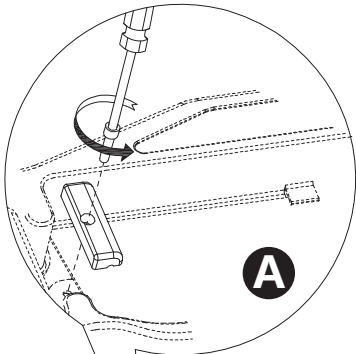
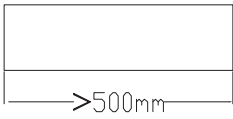
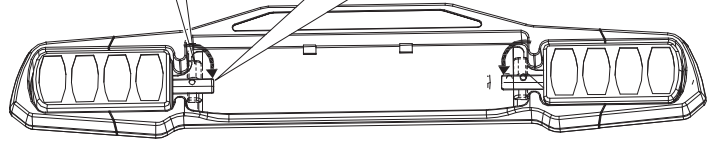
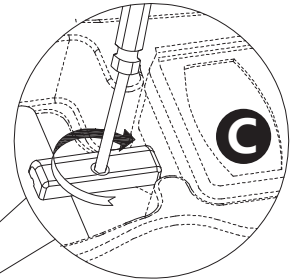
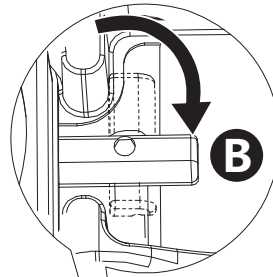
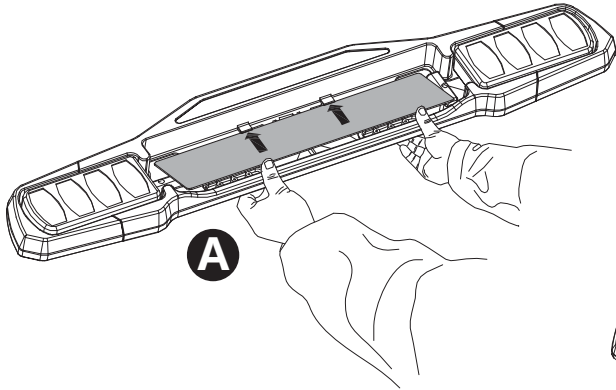
3



4

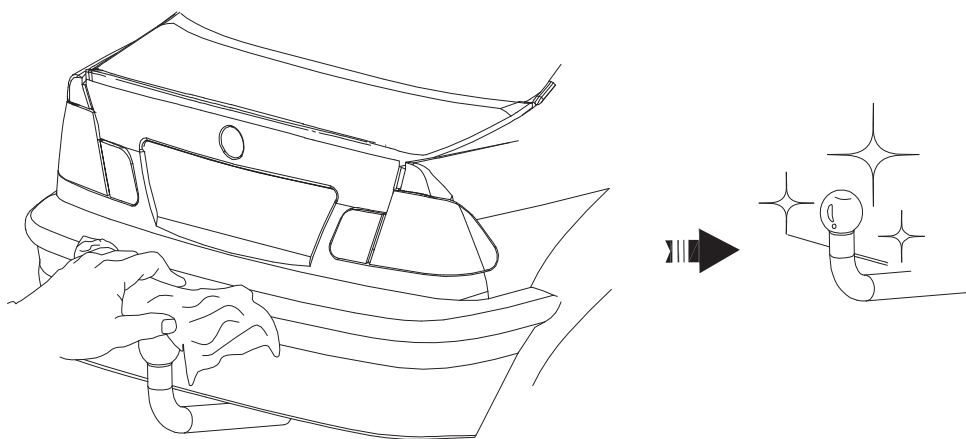


5

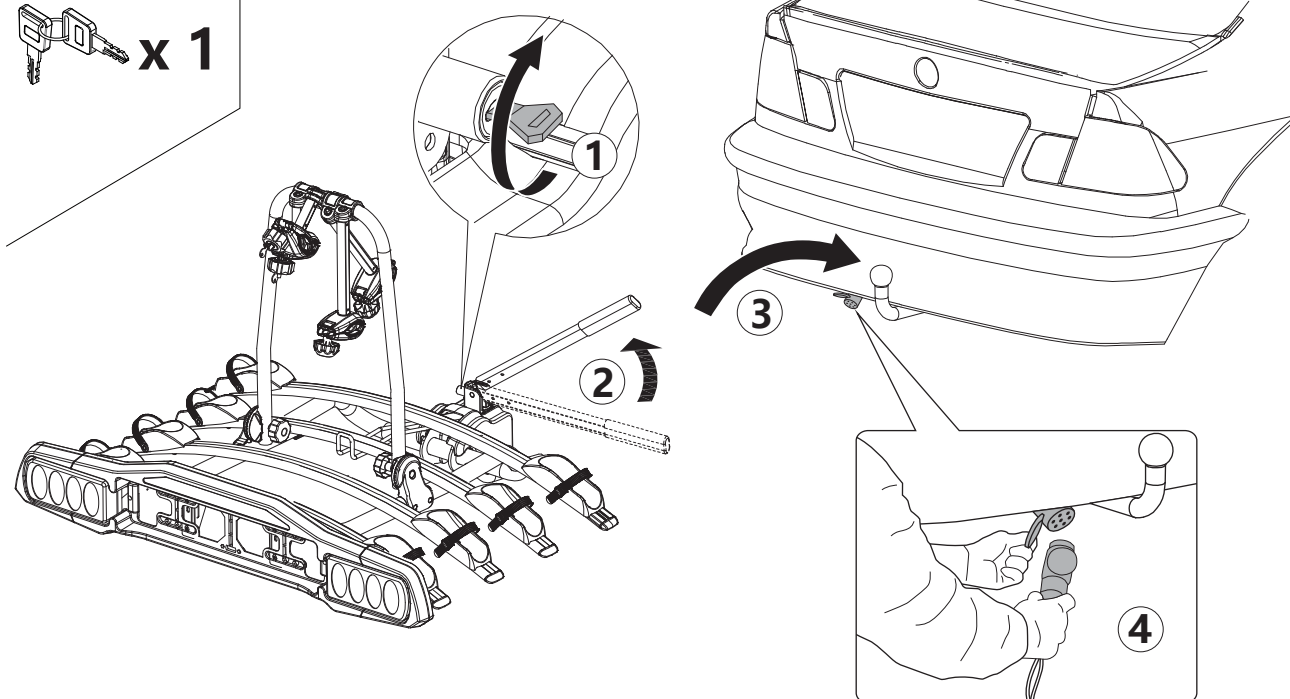


6

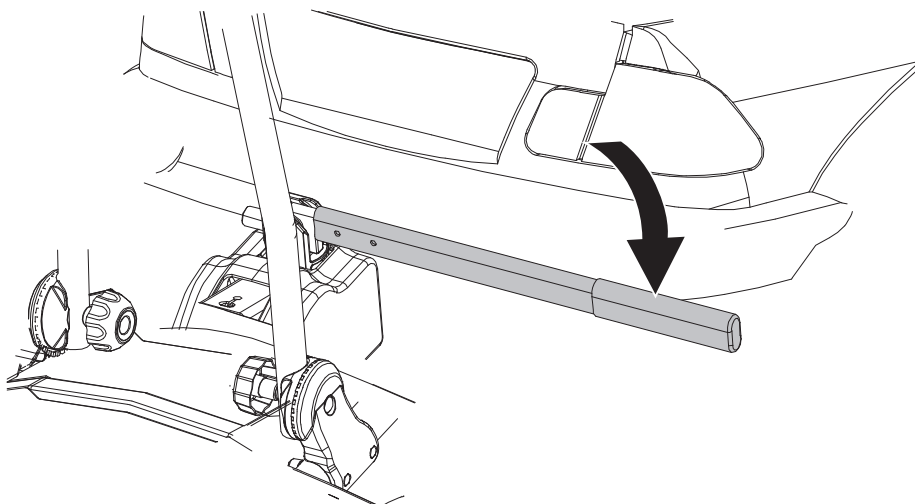
A



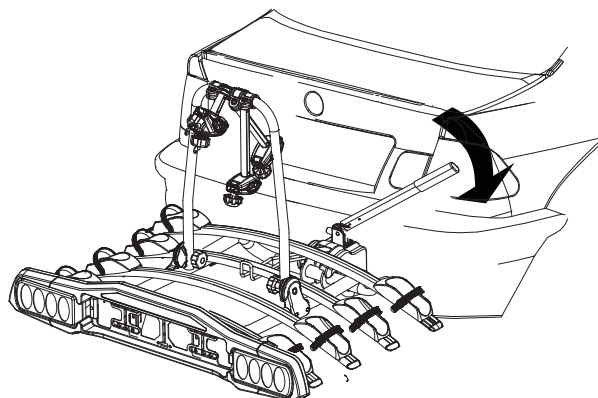
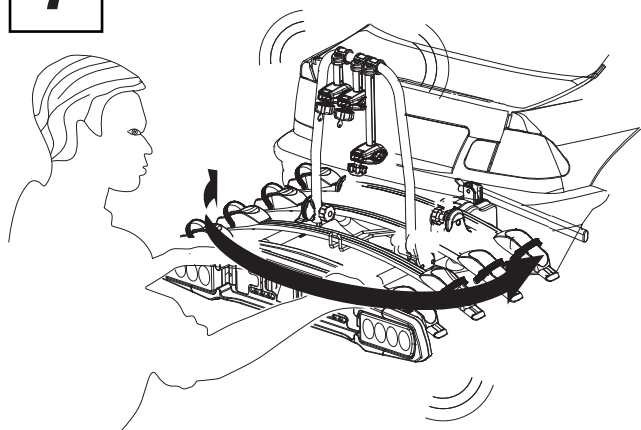
B



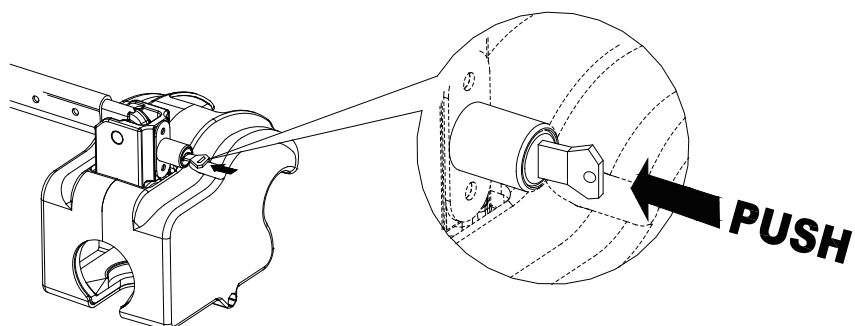
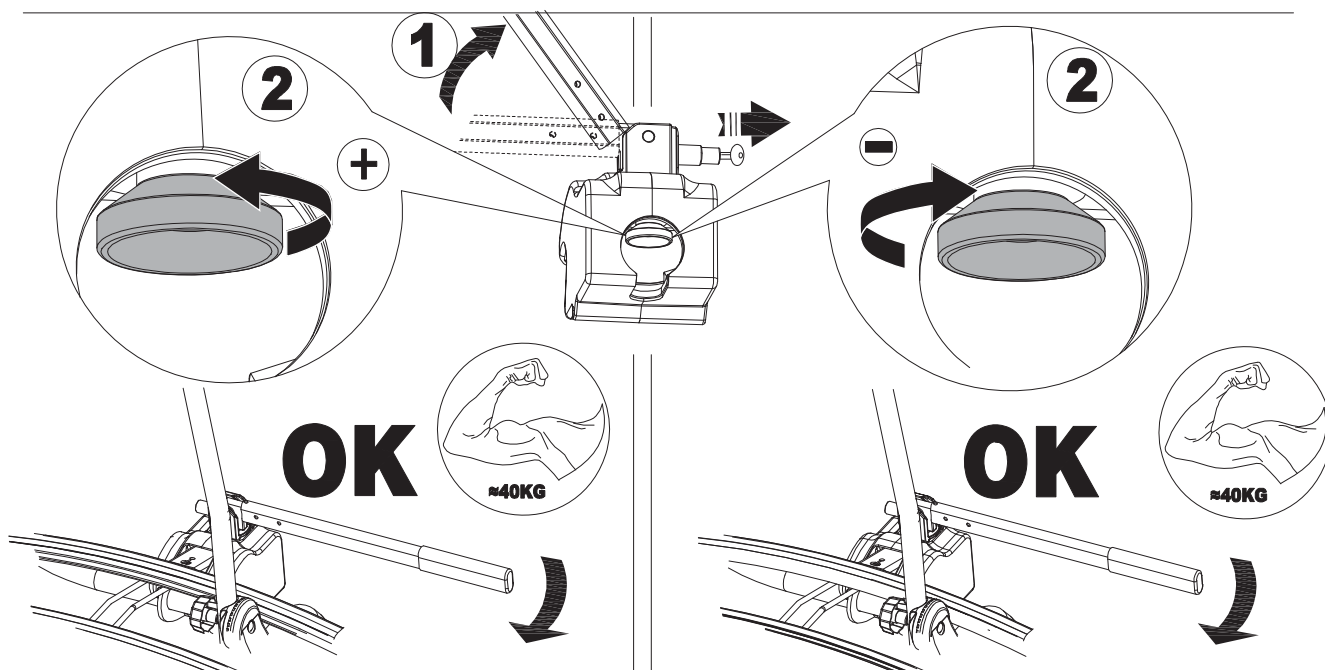
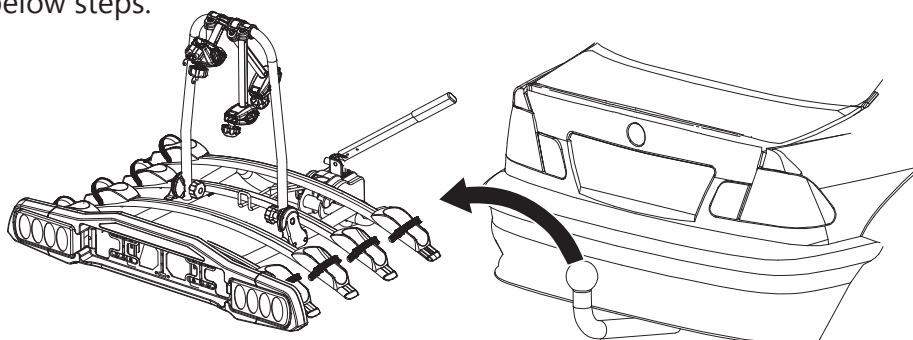
C



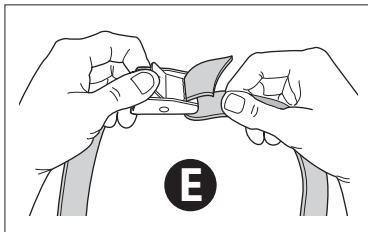
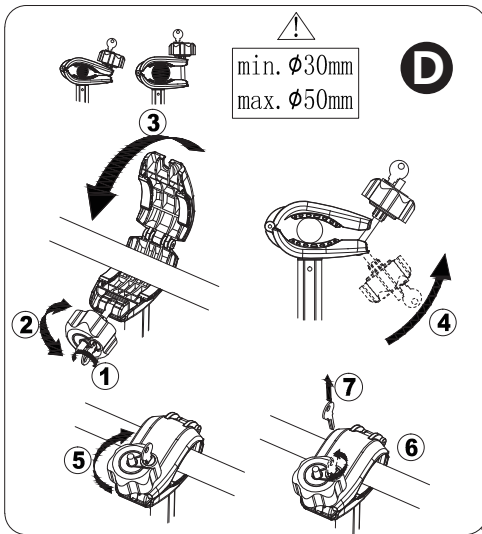
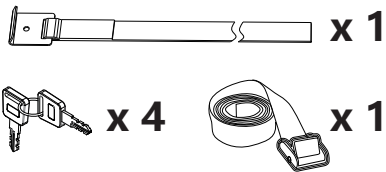
7



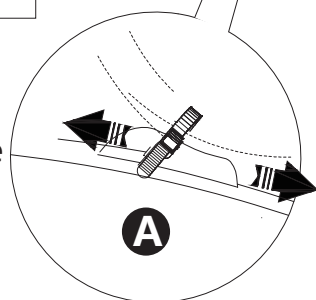
It is critical the carrier is securely clamped onto the towball. If necessary clamping force can be adjusted by following the below steps.



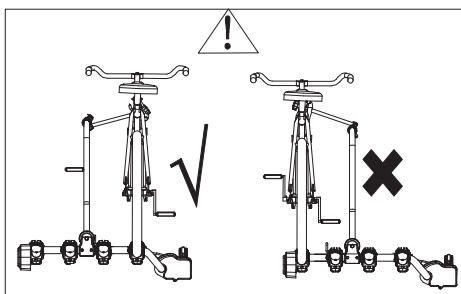
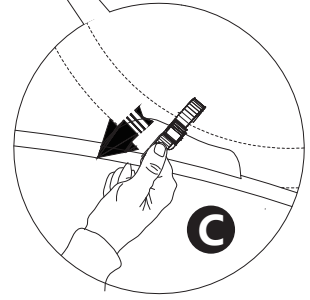
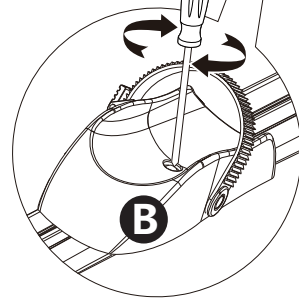
8



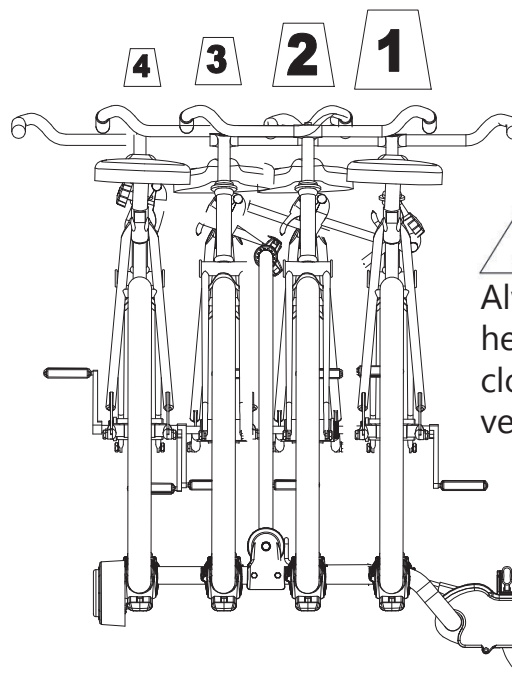
! Ensure the strap is secured around the cycles and the carrier frame.



≈2N.m



- 1** =15kg MAX
- 2** =15kg MAX
- 3** =15kg MAX
- 4** =15kg MAX

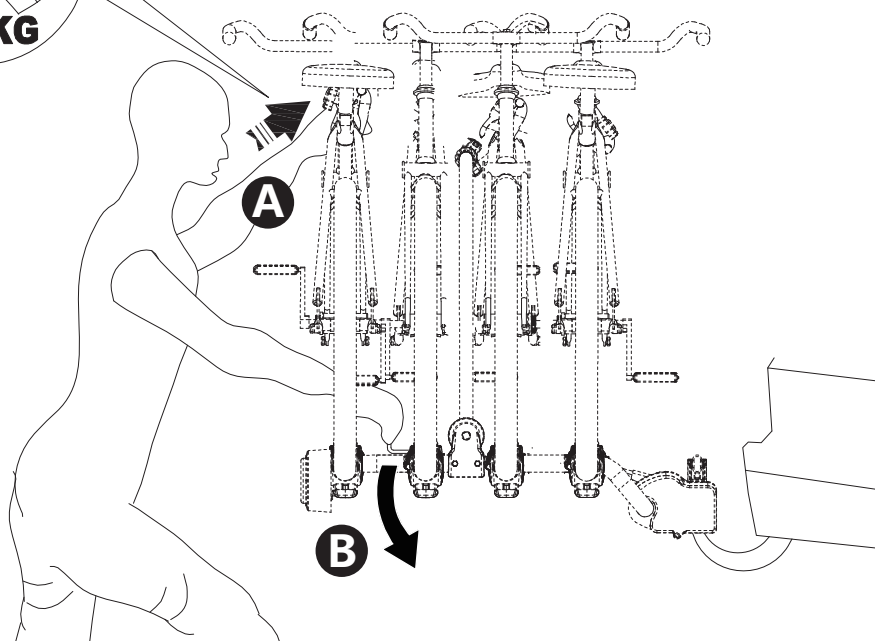
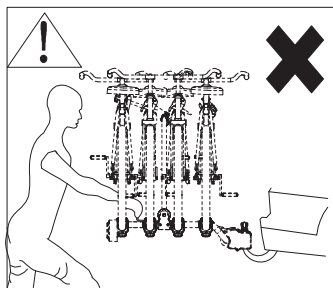
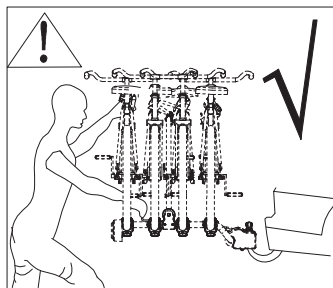


! Always load the heaviest cycle closest to the vehicle

9



Ensure the full weight of the cycles and carrier is fully supported until the carrier is tilted to it's lowest point.



It is recommended that 2 people support the carrier and cycles when tilting.

