

12V COMPACT DIGITAL COMPRESSOR (MP7958)

USER GUIDE



Please read this operating manual fully and abide by all safety instructions when using this device.

Keep these instructions for future reference. When passing the device on to others be sure to also include all documentation. The instruction leaflet is also available on our website:

www.maypoleltd.com

INTENDED USE

This compressor is designed to be used from the standard 12V dc socket in most vehicles, to inflate car and bike tyres, balls, etc. This product is intended for household, consumer use only.

SAFETY

⚠ WARNING

● **Read all safety warnings and all instructions.**

Save all warnings and instructions for future reference.

Work area safety

- Keep work area clean and well lit. Cluttered or dark areas invite accidents.
- Do not operate compressor in explosive atmospheres, such as in the presence of flammable liquids, gases or dust. Power tools create sparks which may ignite the dust or fumes.
- Keep children and bystanders away while operating the compressor. Distractions can cause you to lose control.
- The plug must match the outlet. Never modify the plug in any way.
- Do not expose the compressor to rain or wet conditions. Water entering the compressor will increase the risk of damage.
- Do not use if the switch (1) does not turn the compressor on and off.
- Disconnect the plug from the power source tool before making any adjustments, changing accessories, or storing power tools. Such preventive safety measures reduce the risk of starting the power tool accidentally.
- Store compressor out of the reach of children and do not allow persons unfamiliar with the compressor or these instructions to operate the compressor.
- Always check the compressor before use. If damaged, or worn, do not use.

Device-specific safety instructions

- This appliance may not be used by children or people with reduced physical, sensory or mental capabilities or a lack of experience and knowledge. Children must not use the appliance as a plaything. Cleaning and user maintenance tasks may not be carried out by children unless they are supervised.
- Avoid using the compressor at temperatures below +5 degrees.
- Never leave the compressor unsupervised while it is in use.
- Ensure that the ON/OFF switch is turned off when connecting to the power supply.
- Caution! Operate the compressor only for a short time. The appliance may overheat if operated continuously for longer than 10 minutes. Switch the appliance off immediately and allow it to cool down for at least 20 minutes.

- **Risk of injury!** Do not inflate any objects to more than the intended pressure. They could burst and cause injury and/or material damage.

- Do not exceed the permissible output range of the compressor.

- Never use the appliance for purposes other than the ones for which it was designed.

- The appliance must always be kept clean, dry and free from oil or grease.

- Stay alert, watch what you are doing and use common sense when operating a power tool. Do not use a power tool while you are tired or under the influence of drugs, alcohol or medication.

- Use personal protective equipment. The use of personal protective equipment such as eye protection and hearing protection is recommended.

- Prevent unintentional starting. Ensure the switch is in the off-position before connecting to power source, picking up or carrying the tool.

- Remain alert at all times! Never use the appliance when you are distracted or don't feel well.

- Do not carry the appliance by the power cord and never hang it up by the power cord. Always route the power cord away from the appliance to the rear. **Keep cord away from heat, oil, sharp edges and moving parts.**

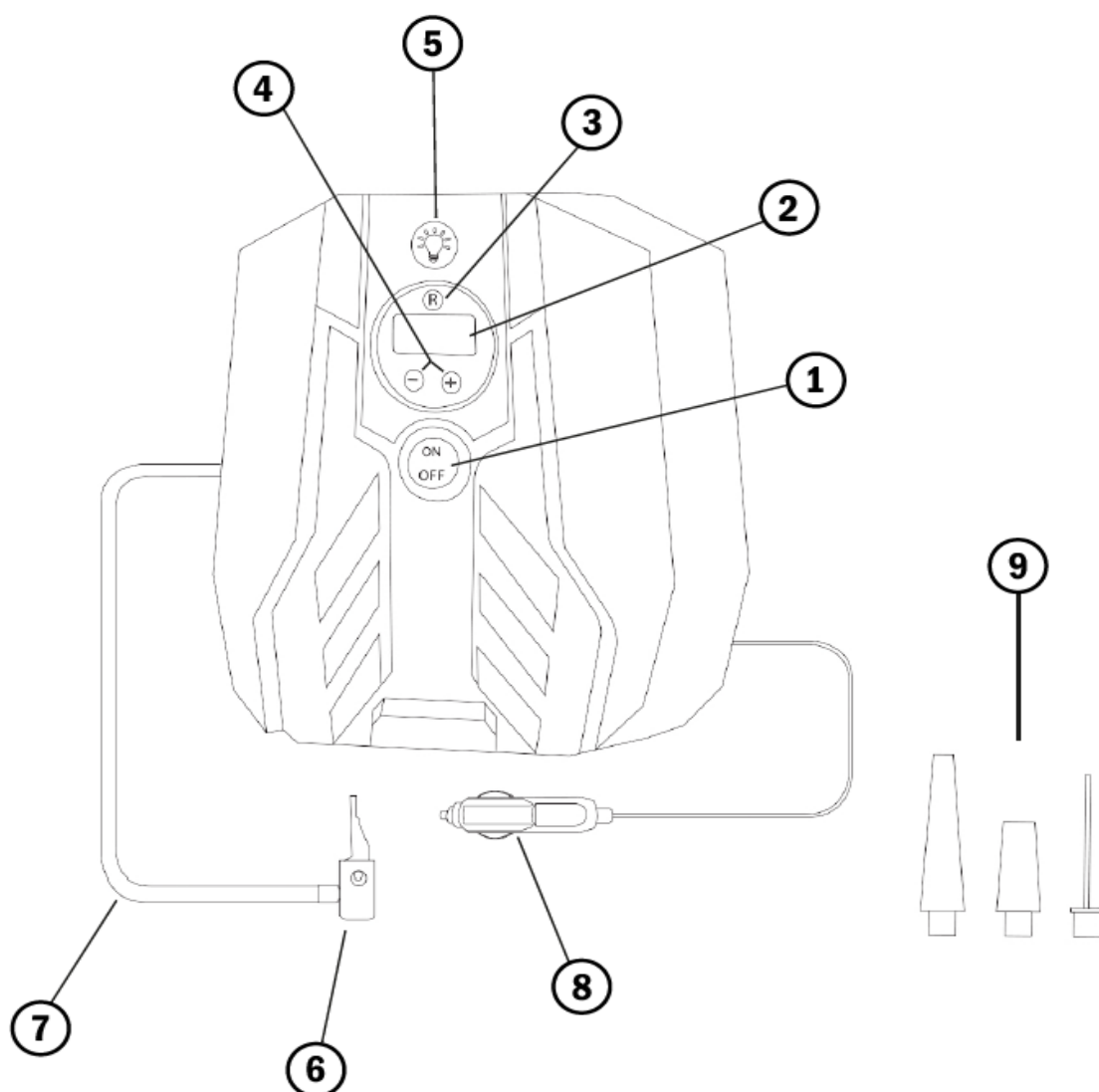
- **Do not use if the cord is worn or damaged.**

- The compressor and hoses can get very hot during operation. Touching them can cause burns.

- When removing the quick coupler, always hold the hose coupling firmly to avoid injury caused by the hose flying off.

- The appliance vibrates during operation. Therefore, always put it down during operation.

PRODUCT LAYOUT

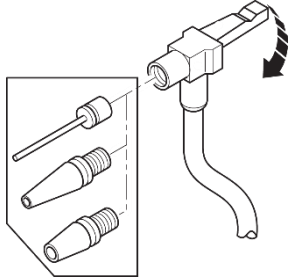


- | | |
|-------------------------|----------------------------|
| 1. ON/OFF switch | 6. Quick release coupler |
| 2. Digital display | 7. Air hose |
| 3. Pressure unit button | 8. 12VDC vehicle connector |
| 4. Pressure set '-' '+' | 9. Inflating adaptors |
| 5. LED light switch | |

USE OF ACCESSORIES

Remove the required accessories from the accessory compartment.

FITTING THE ACCESSORIES



Your compressor is supplied with the standard tapered nozzles and the needle inflator nozzle, these are located at the rear of the unit.

- To use the universal valve adaptor, make sure that the lever is in the up position.
- Place the valve adapter over the stem of the inflation needle or tapered nozzle.
- Press the lever on the valve adapter down to lock it in place.
- Place the inflation needle or tapered nozzle into the item to be inflated.

POWER THE LCD DISPLAY

Note: Make sure that your 12 Volt accessory socket is live. On some vehicles the accessory socket may only become live when the ignition key is in the accessory position.

To power the display from the 12VDC connector, plug it into the vehicle 12V accessory socket.

QUICK START

⚠ WARNING: Never leave inflator running unattended in this mode. It can burst car tyres and other items.

To use your compressor immediately you can do so without setting the automatic shut-off feature.

• **Before use, check the manufacturers recommended tyre pressures for the vehicle.**

- Plug the 12VDC vehicle connector into the vehicle accessory socket. The LCD will be powered.
- To switch between the different units (PSI, BAR or KPA) press the pressure unit button (3) until the required units are displayed.
- Connect the quick coupler (6) and an accessory, if required, to the item to be inflated, making sure that the lever of the coupler is in the down position to lock it in place.

Note: Make sure that the Quick Coupler is correctly fitted to the item to be inflated.

- To start the inflator press the ON/OFF switch (1) to the ON position.
- When the item is inflated as required or to stop the inflator at any time press the ON/OFF switch (1) to the OFF position.
- Remove the quick coupler and/or accessory from the inflated item and the 12 Volt connector (8) from your vehicle's 12 Volt accessory socket.

SETTING THE AUTOMATIC SHUT-OFF PRESSURE

- Pre-set the pressure value by using the '-' or '+' buttons (4) the value will increase or decrease until get the required value.
- After 3 seconds the display will flash and return to a reading of "0.0". This is normal.
- To start the inflator press the ON/OFF switch (1) to the ON position.
- When the item to be inflated has reached the preset value the unit will automatically turn off.
- Remove the quick coupler and/or accessory from the inflated item and the 12 Volt connector (8) from your vehicle's 12 Volt accessory socket.

Note: You may notice the actual pressure reading may drop after a couple of seconds, this is normal.

If the main power switch is turned off, all previous pressure settings will remain unless re-set.

USING THE INFLATOR AS A PRESSURE GAUGE

- Plug the 12VDC vehicle connector into the vehicle accessory socket. The LCD will be powered.
- Connect the quick coupler (6) to the item to be checked.
- The LCD will display the items pressure.
- After checking, return the air hose to the storage location.

MAINTENANCE

The only user serviceable part is a 10Amp fuse located in the 12V connector, this can be checked by unscrewing the spring loaded centre pin from the plug. Only replace with a fuse with identical ratings. Make sure that the machine is not live when carrying out maintenance work. Regularly clean the machine housing with a soft cloth, preferably after each use. Keep the ventilation slots free from dust and dirt. If the dirt does not come off use a soft cloth moistened with soapy water. Never use solvents such as petrol, alcohol, ammonia water, etc. These solvents may damage the plastic parts. The machine requires no additional lubrication.

TECHNICAL SPECIFICATION

Voltage	12V DC power supply – plugs directly into cigar lighter socket
Max Amperage	12A
Max Wattage	100W
Pressure Range	0-150PSI
Power Cable Length	3m
Air Line Length	58cm
Air Flow Rate	15L/ min
Max Continuous Run Time	10mins
Accessories	Tyre, ball & inflatables adaptors

ENVIRONMENTAL PROTECTION



Waste electrical products should not be disposed of with household waste. Please recycle where facilities exist. Check with your local authority or retailer for recycling advice.

Declaration



This apparatus meets the requirements of:

EMC EN 50498:2010

RoHS Directive (EU) 2011/65/EU

Technical Manager, Maypole Ltd, May 2023

Email: sales@maypoleltd.co.uk

Web: www.maypoleltd.com