

ECE TYPE-APPROVAL CERTIFICATE



Communication concerning²:

Approval granted
~~Approval extended~~
~~Approval refused~~
~~Approval withdrawn~~
~~Production definitely discontinued~~

of a type of rear fog lamp for power-driven vehicles and their trailers pursuant to Regulation No. 38

Approval No: E24*38R00/18*0030*00

Reason(s) for extension:

N/A

1. Trade name or mark of the device:



2. Manufacturer's name for the type of device:

3. Manufacturer's name and address:

4. If applicable, name and address of manufacturer's representative: *N/A*

5. Submitted for approval on: *12.02.2018*

6. Technical service responsible for conducting approval tests: *TÜV SÜD Auto Service GmbH
Westendstraße 199
D-80686 München
Germany*

7. Date of test report issued by that service: *06.02.2018*


8. Number of report issued by that service:

¹ Distinguishing number of the country which has granted/refused/withdrawn approval (see approval provisions in the Regulation).

² Strike out which does not apply.



Approval No: E24*38R00/18*0030*00

9. Concise description: *Rear fog lamp category F1*
- Number, category and kind of light source(s): *25*LED Non-replaceable light source*
- Voltage and Wattage: *12V/24V and 2.5W*
- Light source module specific identification code: *N/A*
- Geometrical conditions of installation and relating variations (if any): *See manufacturer's information document*
- Application of an electronic light source control gear/variable intensity control:
- (a) being part of the lamp: *yes/no²* *Yes*
- (b) being not part of the lamp: *yes/no²* *No*
- Input voltage(s) supplied by an electronic light source control gear/variable intensity control: *12V and 24V*
- Electronic light source control gear/variable intensity control manufacturer and identification number (when the light source control gear is part of the lamp but is not included into the lamp body): *N/A*
- Variable luminous intensity: *yes/no²* *No*
- The lamp is only for use on a vehicle fitted with a tell-tale indicating failure: *yes/no²* *No*
10. Position of the approval mark: *On the lens*
11. Reason(s) for extension (if applicable): *N/A*
12. Approval granted/extended/refused/withdrawn² *Granted*
13. Place: *Dublin*
14. Date: *6th March, 2018*
15. Signature: 
16. The list of documents deposited with the Administrative Service which has granted approval, is annexed and may be obtained on request.





NSAI
Certification

Approval No: E24*38R00/18*0030*00

Index to the Information Package

Date of issue: *6th March, 2018*
Date of latest amendment: *N/A*
Reason for extension/revision: *N/A*

1. Additional conditions, and advisory
notes on legal alternatives

2. Test report(s)
- numbers(s):
- date of issue: *06.02.2018*
- date of latest amendment: *N/A*

3. Information document
- number(s):
- date of issue: *25.12.2017*
- date of latest amendment: *N/A*

Documentation: *13 pages*



NSAI

Certification

Approval No: E24*38R00/18*0030*00

Appendix: Additional conditions, and advisory notes on legal alternatives

A: Additional conditions:

1. The device, Type shall be marked as prescribed by the regulation.
2. ~~Fitting instructions shall be supplied with each device, giving details of any limitations in the use of the device.~~
3. The device should be fitted in accordance with the fitting instructions.
4. The attached technical report, with any of its attachments, forms part of this Type Approval certificate.
5. Each individual product from series production shall be to the measurements specified in the attached drawings, and shall be manufactured only from the materials specified in the Approval documents.
6. Changes in the product are permitted only with the explicit permission of NSAI. Breaches of this requirement will lead to a withdrawal of the Type Approval, and in addition may be subject to criminal prosecution.
7. This Type Approval will expire when it is surrendered by the holder, or withdrawn by NSAI, or when the approved type of product no longer conforms to legal requirements. The recall of the Type Approval can be issued by NSAI when the conditions required for the issuing or continuation of the Type Approval are no longer current, or when the Approval holder is in breach of the duties attached to the Type Approval, or when it is established that the approved type no longer meets the requirements of traffic safety.
8. NSAI may at any time check the correct performance of the duties imposed by the grant of this Type Approval, and in order to do so, may make tests, or have tests made.
9. Changes in the company name, address or manufacturing site, as well as in any of the sales or other agents specified in the issuing of the approval must immediately be notified to the NSAI.
10. The duties imposed by the issuing of this certificate are not transferable. The legal protection of third parties is not affected by this certificate.
11. When the manufacture or sale of the vehicle, system, component or separate technical unit has not been started within one year of the date of issue of this certificate, then NSAI is to be informed. This requirement also applies when the manufacture or sale has been halted for more than one year, or when it ought to have been halted for more than one year. The initial commencement of manufacture or sale, or the resumption of manufacture or sale, shall then be notified to NSAI within one month of commencement or resumption.

B : Legal Options

Any objection to the requirements set out in this certificate shall be made within one month of the date of issue. The objection shall be made, in writing, to NSAI in Dublin



Technical Report No.:
Manufacturer:
Type:

TECHNICAL REPORT

No.:

Test according to ECE regulation relating to

Rear fog lamp category F1

ECE Regulation No.: 38

supplement 18 to the 00 series of amendments

Approvals granted up to now		
ECE	Number of approval	Date
	---	---

Technical Report No.:

Manufacturer:

Type:

Page 2 / 9

I. **Technical description**

0.1. Make (trade name of manufacturer) :



0.2. Type :

0.2.1. Variants : N/A

0.3. Means of identification of type : By digits and letters

0.4. Concise description

Category : Rear fog lamp category F1

Number, category and kind of light source(s) : 25*LEDs

Voltage and wattage : 12V/24V and 2.5W

Light source module specific identification code : N/A

Geometrical conditions of installation and relating variations, if any : See manufacturer's information document

Application of an electronic light source control gear/variable intensity control :

Being part of the lamp : Yes

Being not part of the lamp : No

Input voltage(s) supplied by an electronic light source control gear/variable intensity control : 12V and 24V

Electronic light source control gear/variable intensity control manufacturer and identification number (when the light source control gear is part of the lamp but is not included into the lamp body) : N/A

Variable luminous intensity : No

Technical Report No.:
Manufacturer:
Type:

Page 3 / 9

- The lamp is only for use on a vehicle fitted with a tell-tale indicating failure : No
- 0.5. Name and address of manufacturer :
- 0.8. Address of assembly plant :
- 0.9. Location of the approval mark : On the lens
- 0.10. If applicable, name and address of the manufacturer's representative : N/A
- II. Test record**
1. Test conditions
- 1.1. Technical data of the test samples : Two samples were tested.
Marking:
Sample No. 1 and Sample No. 2.
For information about the form of the lamp, the position of the reference point and the reference axis, see information document.
- 1.2. Test procedures used : According to ECE Regulation No.: 38.00.
- 1.3. Measuring and test equipment : Full automatic photometric test system for automobile lamps
EVERFINE PHOTO-E-INFO CO., LTD.
Type GO-HD5
2. Test results
- 2.1. General Specifications
Rear fog lamps have been designed and constructed that in normal use, despite the vibration to which they may then be subjected, they continue to function satisfactorily and retain the characteristics prescribed by this regulation.
No light source module or light generator is used.

Technical Report No.: 40 00001 01 011 00

Manufacturer:

Type:

2.2. Intensity of light emitted - Mounting position 1

2.2.1. Sample No. 1, normal mode, 25 LEDs lit together, test voltage 11.999V.

No.	Point of the measurement	Limits [cd]		Measured values [cd]			Conclusion
		Min.	Max.		30 Minutes	1 Minute	
1	From H-10L to H-10R	150.00	300.00	Min.	181.12	183.93	Complies
				Max.	247.03	250.87	Complies
2	From 5U-V to 5D-V	150.00	300.00	Min.	183.42	186.27	Complies
				Max.	248.18	252.03	Complies
3	H-V	150.00	300.00	Min.	235.65	239.31	Complies
4	Rear Fog Zone	75.00	300.00	Min.	110.67	112.39	Complies
				Max.	252.47	256.39	Complies
5	All Directions	---	300.00	Max.	253.04	256.97	Complies

2.2.2. Sample No. 2, normal mode, 25 LEDs lit together, test voltage 23.999V.

No.	Point of the measurement	Limits [cd]		Measured values [cd]			Conclusion
		Min.	Max.		30 Minutes	1 Minute	
1	From H-10L to H-10R	150.00	300.00	Min.	182.45	185.65	Complies
				Max.	245.93	250.24	Complies
2	From 5U-V to 5D-V	150.00	300.00	Min.	182.18	185.37	Complies
				Max.	246.73	251.05	Complies
3	H-V	150.00	300.00	Min.	233.49	237.58	Complies
4	Rear Fog Zone	75.00	300.00	Min.	104.36	106.19	Complies
				Max.	249.11	253.47	Complies
5	All Directions	---	300.00	Max.	251.00	255.40	Complies

Technical Report No.:
 Manufacturer:
 Type:

Page 5 / 9

2.2.3. Sample No. 1, failure mode, 23 LEDs lit together, test voltage 11.999V.

No.	Point of the measurement	Limits [cd]		Measured values [cd]			Conclusion
		Min.	Max.		30 Minutes	1 Minute	
1	From H-10L to H-10R	150.00	300.00	Min.	173.29	175.85	Complies
				Max.	233.90	237.35	Complies
2	From 5U-V to 5D-V	150.00	300.00	Min.	174.71	177.29	Complies
				Max.	233.87	237.32	Complies
3	H-V	150.00	300.00	Min.	222.21	225.49	Complies
4	Rear Fog Zone	75.00	300.00	Min.	102.61	104.12	Complies
				Max.	236.82	240.32	Complies
5	All Directions	---	300.00	Max.	238.49	242.01	Complies

2.2.4. Sample No. 2 failure mode, 23 LEDs lit together, test voltage 23.999V.

No.	Point of the measurement	Limits [cd]		Measured values [cd]			Conclusion
		Min.	Max.		30 Minutes	1 Minute	
1	From H-10L to H-10R	150.00	300.00	Min.	173.60	176.27	Complies
				Max.	235.92	239.55	Complies
2	From 5U-V to 5D-V	150.00	300.00	Min.	173.45	176.12	Complies
				Max.	236.21	239.84	Complies
3	H-V	150.00	300.00	Min.	227.09	230.58	Complies
4	Rear Fog Zone	75.00	300.00	Min.	99.97	101.51	Complies
				Max.	239.07	242.74	Complies
5	All Directions	---	300.00	Max.	243.01	246.74	Complies

Technical Report No.:
 Manufacturer:
 Type:

2.2. Intensity of light emitted - Mounting position 2

2.2.1. Sample No. 1, normal mode, 25 LEDs lit together, test voltage 11.999V.

No.	Point of the measurement	Limits [cd]		Measured values [cd]			Conclusion
		Min.	Max.		30 Minutes	1 Minute	
1	From H-10L to H-10R	150.00	300.00	Min.	180.23	183.04	Complies
				Max.	246.32	250.17	Complies
2	From 5U-V to 5D-V	150.00	300.00	Min.	182.54	185.39	Complies
				Max.	244.27	248.08	Complies
3	H-V	150.00	300.00	Min.	241.49	245.26	Complies
4	Rear Fog Zone	75.00	300.00	Min.	107.69	109.37	Complies
				Max.	248.77	252.65	Complies
5	All Directions	---	300.00	Max.	250.64	254.55	Complies

2.2.2. Sample No. 2, normal mode, 25 LEDs lit together, test voltage 23.999V.

No.	Point of the measurement	Limits [cd]		Measured values [cd]			Conclusion
		Min.	Max.		30 Minutes	1 Minute	
1	From H-10L to H-10R	150.00	300.00	Min.	178.31	181.32	Complies
				Max.	241.91	245.99	Complies
2	From 5U-V to 5D-V	150.00	300.00	Min.	180.46	183.50	Complies
				Max.	242.78	246.87	Complies
3	H-V	150.00	300.00	Min.	238.47	242.49	Complies
4	Rear Fog Zone	75.00	300.00	Min.	102.64	104.37	Complies
				Max.	244.59	248.71	Complies
5	All Directions	---	300.00	Max.	246.56	250.72	Complies

Technical Report No.:
 Manufacturer:
 Type:

2.2.3. Sample No. 1, failure mode, 23 LEDs lit together, test voltage 11.999V.

No.	Point of the measurement	Limits [cd]		Measured values [cd]			Conclusion
		Min.	Max.		30 Minutes	1 Minute	
1	From H-10L to H-10R	150.00	300.00	Min.	171.26	173.41	Complies
				Max.	237.39	240.37	Complies
2	From 5U-V to 5D-V	150.00	300.00	Min.	174.55	176.74	Complies
				Max.	235.37	238.33	Complies
3	H-V	150.00	300.00	Min.	230.68	233.58	Complies
4	Rear Fog Zone	75.00	300.00	Min.	101.21	102.48	Complies
				Max.	239.17	242.18	Complies
5	All Directions	---	300.00	Max.	241.33	244.36	Complies

2.2.4. Sample No. 2, failure mode, 23 LEDs lit together, test voltage 23.999V.

No.	Point of the measurement	Limits [cd]		Measured values [cd]			Conclusion
		Min.	Max.		30 Minutes	1 Minute	
1	From H-10L to H-10R	150.00	300.00	Min.	169.12	171.03	Complies
				Max.	232.72	235.35	Complies
2	From 5U-V to 5D-V	150.00	300.00	Min.	172.56	174.51	Complies
				Max.	234.58	237.23	Complies
3	H-V	150.00	300.00	Min.	230.28	232.88	Complies
4	Rear Fog Zone	75.00	300.00	Min.	95.34	96.42	Complies
				Max.	237.61	240.29	Complies
5	All Directions	---	300.00	Max.	239.34	242.04	Complies

Technical Report No.:

Manufacturer:

Type:

Page 8 / 9

2.3. Colour - Red

Sample	Measured values		Limits		Conclusion
	x	y	$y \leq 0.335$	$y \geq 0.980 - x$	
No. 1	0.6966	0.3014	Yes	Yes	Complies
No. 2	0.6973	0.3010	Yes	Yes	Complies

2.4. Test record of apparent surface

The apparent surface of the rear fog lamps is $49\text{cm}^2 \leq 140\text{cm}^2$ (Complies)

2.5. Test record of heat resistance test

Requirement	After the lamp has been stabilized at the ambient temperature, no distortion, deformation, cracking or colour modification shall be perceptible.
Results	After the lamp has been stabilized at the ambient temperature, both sample No. 1 and No. 2 had no distortion, deformation, cracking or colour modification.
Conclusion	Complies

2.6. Apparent surface

Limit (I)	Limit (O)	Limit (U)	Limit (D)
35mm	35mm	35mm	35mm

3. Specimen submitted to test on : 2017-12-25 (YYYY-MM-DD)

4. Place of test : Jiangsu Huachen Vehicle Inspection Co., Ltd., Zhenjiang City, P.R. China

Date of test : 2018-01-03 (YYYY-MM-DD)

III. Enclosures

Manufacturer's information document No. :

Dated on : 2017-12-25 (YYYY-MM-DD)

Technical Report No.:
 Manufacturer:
 Type:

IV. Statement of conformity

The information folder as mentioned under No. III and the type described therein are in compliance with the test specification mentioned above. The worst-case was selected in accordance with document "Preparation of Test Reports".

The test report may be reproduced and published in full and by the client only. It can be reproduced partially with the written permission of the test laboratory only.

München, 2018-02-06
 (YYYY-MM-DD)



Joe Zhou


Test Laboratory / DIN EN ISO 17025

Genehmigungsbehörde/ Approval authority	Land/Country	Registriernummer/ Registration-number	Aktueller Benennungsumfang/ Actual scope list
Kraftfahrt-Bundesamt (KBA)	Deutschland/ Germany	KBA-P 00100-10	www.kba.de
Vehicle Certification Agency (VCA)	Vereintes Königreich/ United Kingdom	VCA-TS-006	http://ec.europa.eu/enterprise/sectors/automotive/approval-authorities-technical-services/technical-services/index_en.htm
Approval Authority of the Netherlands (RDW)	Niederlande/ The Netherlands	RDWT-082-XX	
National Standards Authority of Ireland (NSAI)	Irland/ Ireland	Technical Service Number: 49	
Vehicle Safety Certification Center (VSCC)	Taiwan/ Taiwan	DE04-06-2	http://www.vsc.org.tw/English/Default.aspx

Information folder No. :

First application date : December 25, 2017

1. Specification data

Type		
Function		Rear fog lamp
Color		Red
Rated	Voltage	12V/24V*
	Wattage	2.5W
Application Regulation ECE		R38.00 Cat. F1
Location of marking	Number and category of light source	25*LED Non-replaceable light source Marked on LED PCB
	Trade mark	 Marked on lens
	Approval mark	Marked on lens
Remark		The lamp is only for use on a vehicle fitted with a tell-tale indicating failure: No *: Application of an electronic light source control gear: Being part of the lamp Input voltage: 12V/24V

2. Construction and material

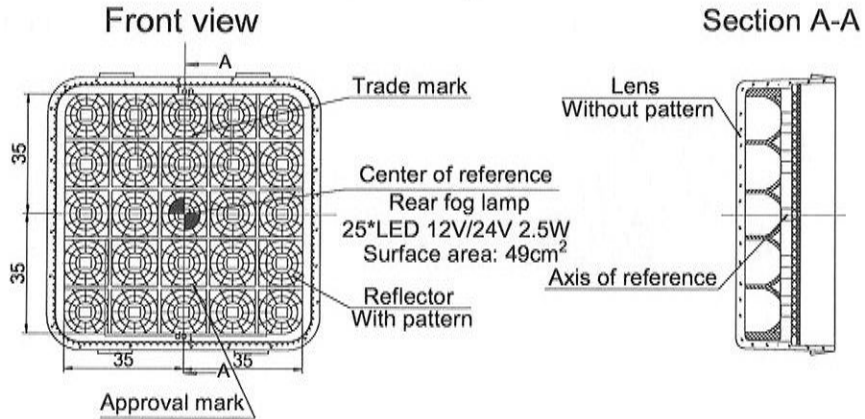
Construction	Material	Remarks
Lens	PMMA	Colour: Red
Reflector	ABS	AL vacuum vapour coating Painting on the inside surface Colour: Metal silver
Housing	Epoxy resin	To ensure air-tightness of the lamp
Electrical Wiring	Copper covered with insulation	--

3. Name and address of manufacturer :

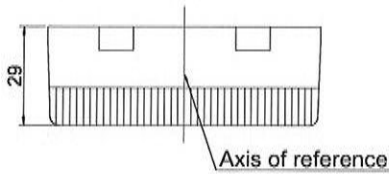
4. Name and address of the assembly plant :

5. Name and address of the manufacturer's representative : N/A

Mounting Position 1



Top view

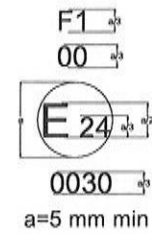
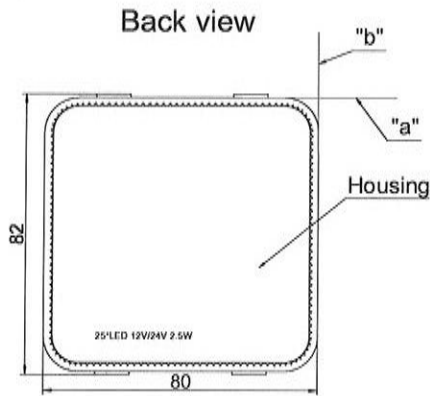


NOTE:
 1. "a": Horizontal Plane of Vehicle
 2. "b": Longitudinal Plane of Vehicle

Trade mark



Approval mark

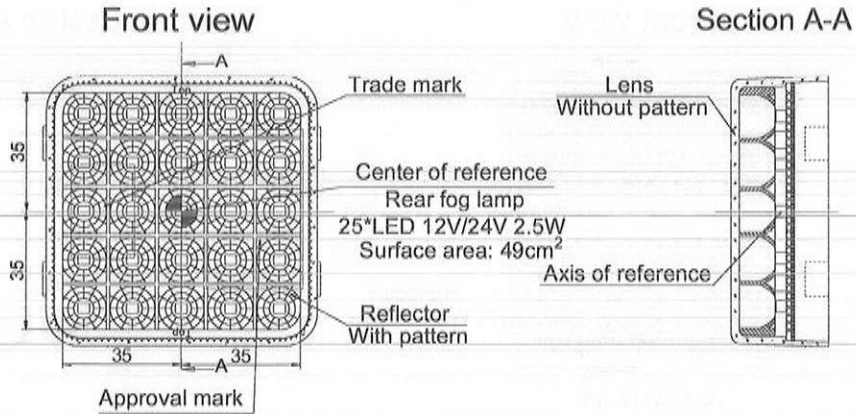


Product Type	
General assembly drawing	
Drawing No.	

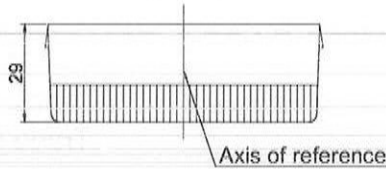
Information folder No. :

First application date : December 25, 2017

Mounting Position 2



Top view



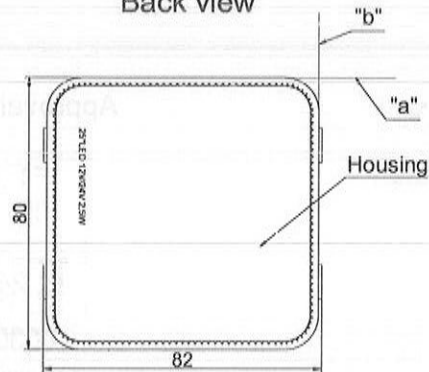
NOTE:

1. "a": Horizontal Plane of Vehicle
2. "b": Longitudinal Plane of Vehicle

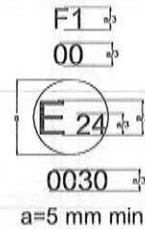
Trade mark



Back view



Approval mark



Product Type	
General assembly drawing	
Drawing No.	

Information folder No. :

First application date : December 25, 2017

